

RISO FW / GD Series

Printing from USB Drives using the PS-Kit Option

Getting Started Guide



This publication is intended as a quick guide to printing from a USB Drive when the optional PS-Kit is fitted to a RISO ComColor FW or GD Series printer.

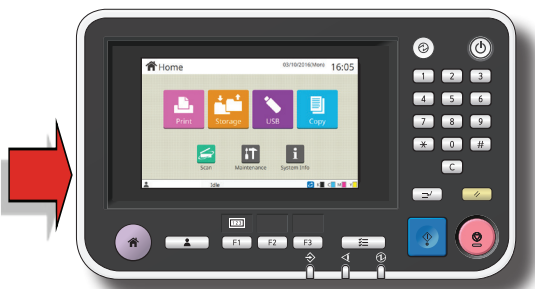
Please Note:

The PS-Kit option must be installed on the RISO printer to enable you to print directly from a USB Drive.

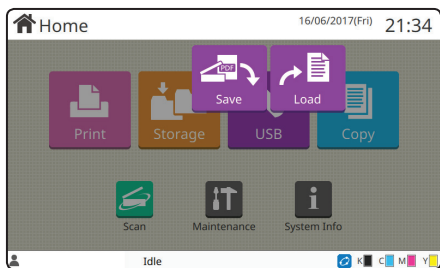
The purple “USB” icon must be visible on the home screen display. This icon could be displayed in a different position on the home screen to that shown below.

Only PDF Files can be printed directly from a USB Drive using this method.

The panels illustrated are from the FW series, the look of the GD panel may differ slightly in design



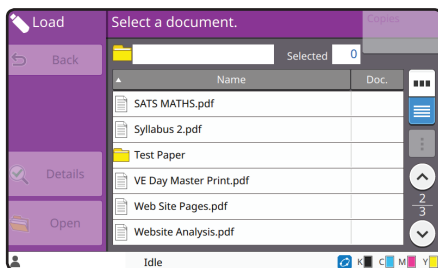
A Insert USB Drive containing the PDF files required for printing in the USB port on the left hand side of the operational panel.



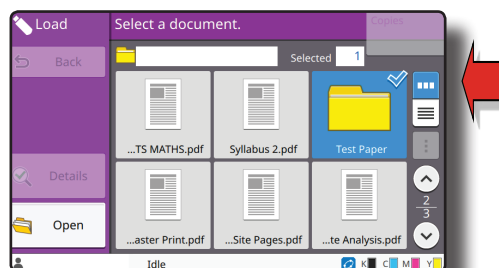
B Once the USB Drive has been inserted the “Save / Load” icons will automatically appear.


If the two icons fail to appear after inserting the USB Drive just select the purple “USB” icon.

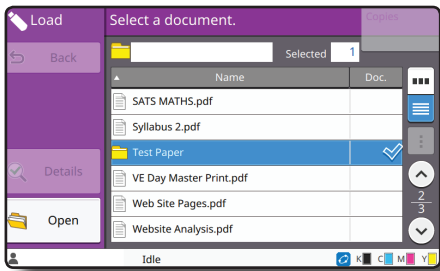
Select “Load”



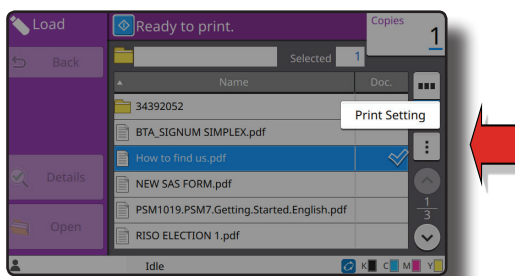
C After selecting “Load” suitable PDF documents or folders containing PDF’s will be displayed.



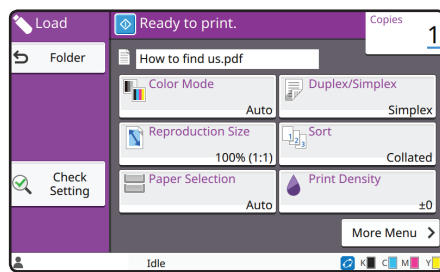
You can change the screen view of the PDF files and folders to a thumbnail view by selecting 



D To print select the PDF press to highlight
 If the PDF you wish to print is in a folder highlight the folders and select “Open” to access.



E If you wish to change the print settings prior to printing select  and “Print Settings”



F In “Print Settings” it allows the user to select or adjust a number of settings including:

- Colour Mode
- Resizing
- Simplex or Duplex
- Paper Tray Selection
- Combine / Image Repeat
- Stamp
-and many others.



E Finally select your number of copies using the keyboard.

Press the blue “Start” button.

