



Riso Comcolor X1 Series

Getting Started Guide

Printing from a USB Drive



Riso (UK) Limited
X1 Series USB Printing V.2

Please Note

This guide describes printing from a USB Drive on a Comcolor X1 Series (9150, 7150 or 3110 models) where the USB print function has been enabled.

For further details please contact your Riso Representative

RISO (UK) Limited

Service Helpdesk 020 8236 5832

Supplies (Ink & Staples) 0800 783 2086

Head Office 020 8236 5800

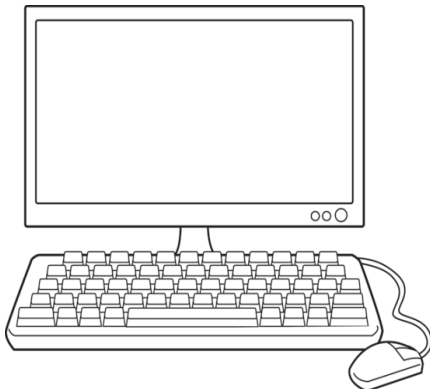
X1 Series - Printing from a USB Drive

Introduction

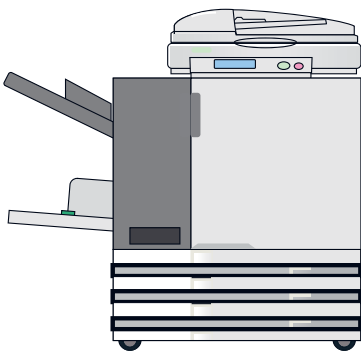
This booklet is intended as a guide to producing prints on a Riso Comcolor X1 Series model from a USB Flash Drive.

It is important to remember that in order to print from a USB Drive on the Comcolor X1 Series the data to be printed has to be in .prn format, documents in formats such as PDF, Microsoft Word etc cannot be printed directly using this method and must first be converted using the Comcolor X1 printer drivers

Details of this simple operation are described on the following pages but a brief two step introduction is shown below.



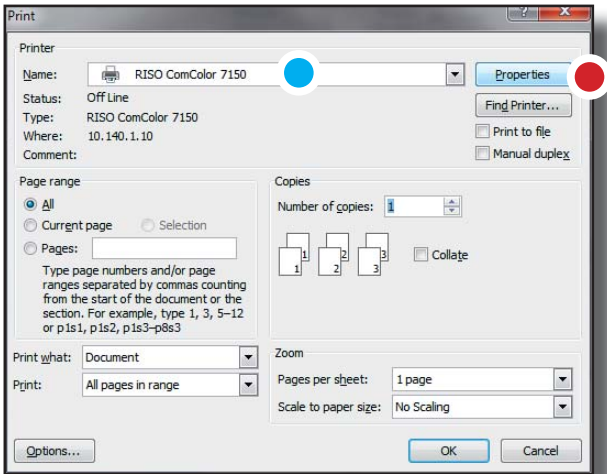
A **SAVE TO USB DRIVE**
Inset USB Drive into your PC and use the Riso Comcolor X1 Series Printer Drivers to save your document to the USB Drive



B **PRINT OUT DOCUMENTS FROM USB DRIVE**
Remove USB Drive from PC and insert into Riso Comcolor X1 Series select job and press start - document will then be printed

X1 Series - Printing from a USB Drive

Save to USB Drive

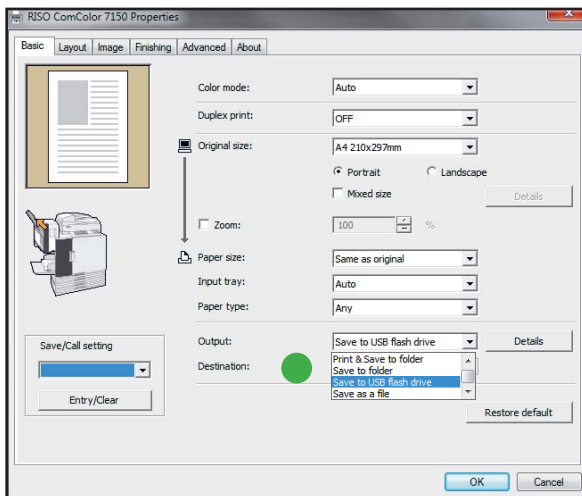


Insert USB Flash Drive into a vacant USB port on your PC

Open document to be printed on your PC screen and select > File > Print

A Choose your Comcolor Printer (This should be a 9150, 7150 or 3110 model)

B Select > Properties



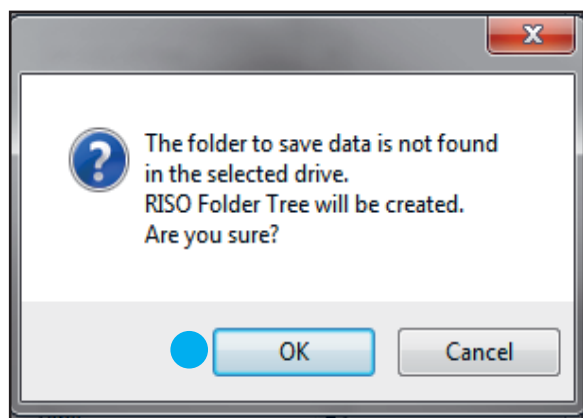
In the Driver Properties first make your print selections exactly as you would if going directly to print.

This includes the options on paper, layout, sizing, finishing etc.

C In Output select > Save to USB Flash Drive from the drop down menu

X1 Series - Printing from a USB Drive

Save to USB Drive

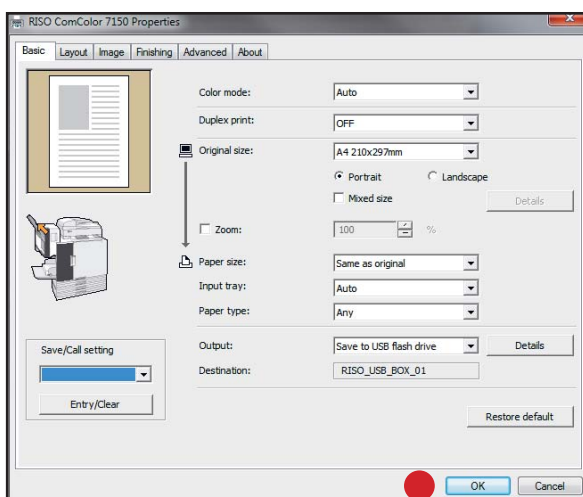


If the USB Flash Drive is being used for this function for the first time the message shown left will be displayed

If this message is displayed **Select > OK** ●

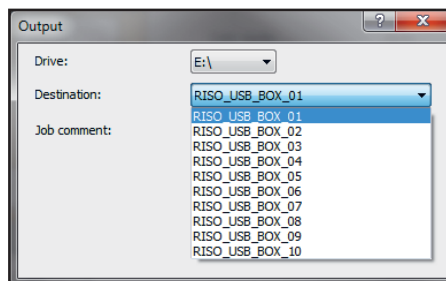
This will create a number of folders on your USB Drive that can be selected for storing your print jobs.

Creating these folders will not effect any other data currently stored on your USB Flash Drive



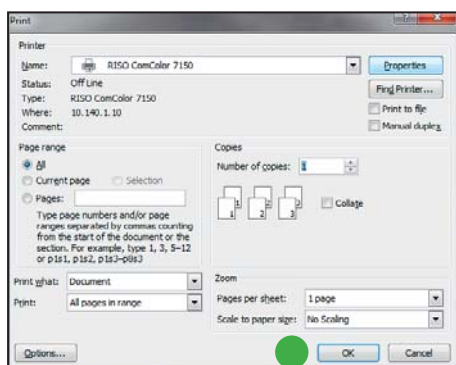
D Using > Output > Details

The menu below will open and you can select in which particular folder on the USB Drive you wish to save your job



E When all the previous steps have made **Select > OK** ●

F You will then return to the Print Dialogue box where you **Select > OK** ● to complete the operation and transfer the file to the USB Drive.



Once your document(s) have been saved to the USB Flash Drive they can be printed out on the Riso Comcolor X1 models (9150, 7150 or 3110)

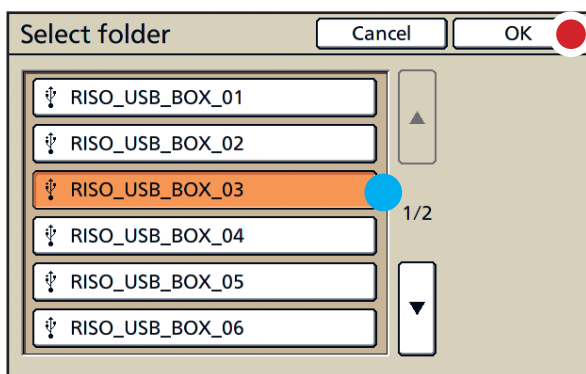
X1 Series - Printing from a USB Drive

Print out documents from a USB Drive



A Once the steps on the previous pages have completed insert your USB Flash Drive into the USB port of the Comcolor printer

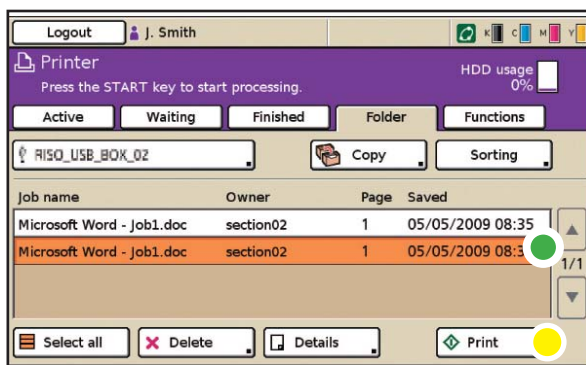
The USB port can be found on the right hand side of the operational panel



The Select folder screen should then be automatically displayed.

B Select the folder in which you have saved your documents

C Press > OK.



Jobs saved in the selected folder will then be displayed

D Select the job to be printed.

E Press > Print.
Your document will then be printed

Produced by RISO (UK) Limited
www.riso.co.uk

610 Centennial Park, Centennial Avenue
Elstree, Hertfordshire, WD6 3TJ
Tel: 020 8236 5800
Fax: 020 8236 5801