

# **RISO FW / GD Series**

## **Printing from USB Drives**

### **Using the PS-Kit Option**

#### Getting Started Guide



This publication is intended as a quick guide to printing from a USB Drive when the optional PS-Kit is fitted to a RISO ComColor FW Series printer.

### Please Note:

The PS-Kit option must be installed on the RISO printer to enable you to print directly from a USB Drive.

The purple “USB” icon must be visible on the home screen display. This icon could be displayed in a different position on the home screen to that shown below.

Only PDF Files can be printed directly from a USB Drive using this method.



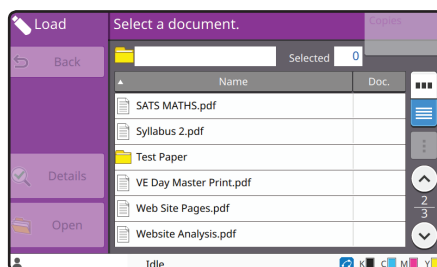
- A** Insert USB Drive containing the PDF files required for printing in the USB port on the left hand side of the operational panel.



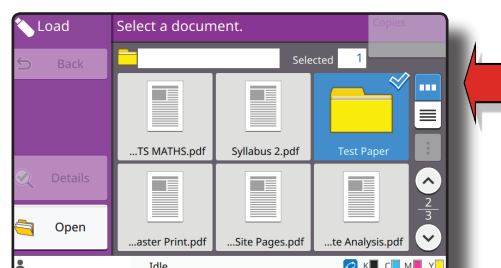
- B** Once the USB Drive has been inserted the “Save / Load” icons will automatically appear.

If the two icons fail to appear after inserting the USB Drive just select the purple “USB” icon.

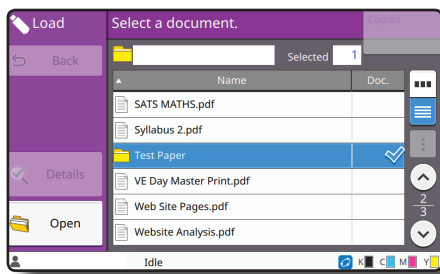
Select “Load”



- C** After selecting “Load” suitable PDF documents or folders containing PDF's will be displayed.



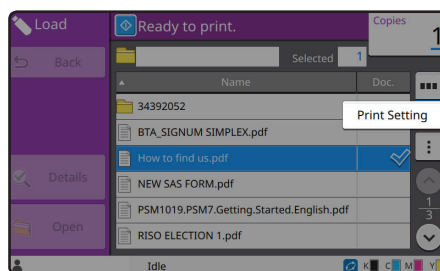
You can change the screen view of the PDF files and folders to a thumbnail view by selecting 



**D**

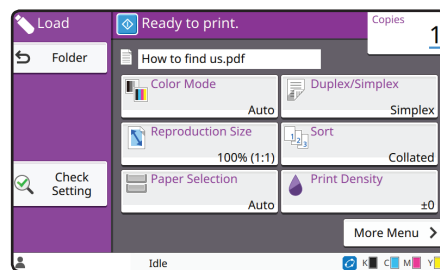
To print select the PDF press to highlight

If the PDF you wish to print is in a folder highlight the folders and select "Open" to access.



**E**

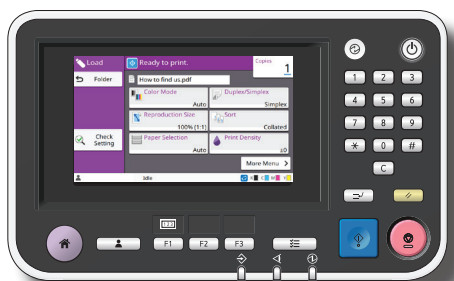
If you wish to change the print settings prior to printing select  and "Print Settings"



**F**

In "Print Settings" it allows the user to select or adjust a number of settings including:

Colour Mode  
Resizing  
Simplex or Duplex  
Paper Tray Selection  
Combine / Image Repeat  
Stamp  
....and many others.



**E**

Finally select your number of copies using the keyboard.

Press the blue "Start" button.



Published by RISO UK Ltd - July 2017  
610 Centennial Park, Centennial Avenue  
Elstree, Herts, WD6 3TJ  
Tel: 020 8236 5800  
[www.riso.co.uk](http://www.riso.co.uk)