

# RISO Model Series X1/FW/FT/GD/GL

Driver Install  
Setup Guide v1.4



All RISO Inkjet (IJ) print driver packages are digitally signed, there are two driver types available:

- **RISO signed** drivers. These are signed & certified by RISO Kagaku Corporation.
- **Microsoft signed** drivers. These are signed & certified by Microsoft and have passed the Windows Hardware Quality Labs (WHQL) compliance test.

It is recommended to install the **Microsoft signed (WHQL)** drivers, particularly when used in a Windows Client-Server model with print drivers distributed via Group Policy.

Please note: Due to the time required to complete the (WHQL) compliance process, Microsoft signed drivers may be a version step behind the latest RISO signed drivers.

**All driver packages are available from the RISO Download Centre -**  
<https://www.riso.com/download/>

**IMPORTANT**

- Please unzip the downloaded driver package to a folder location before installing.
- When installing the RISO driver onto the server or client PC, you must run the **install.exe** or **setup.exe** application located in unzipped folder location.

Fig.1

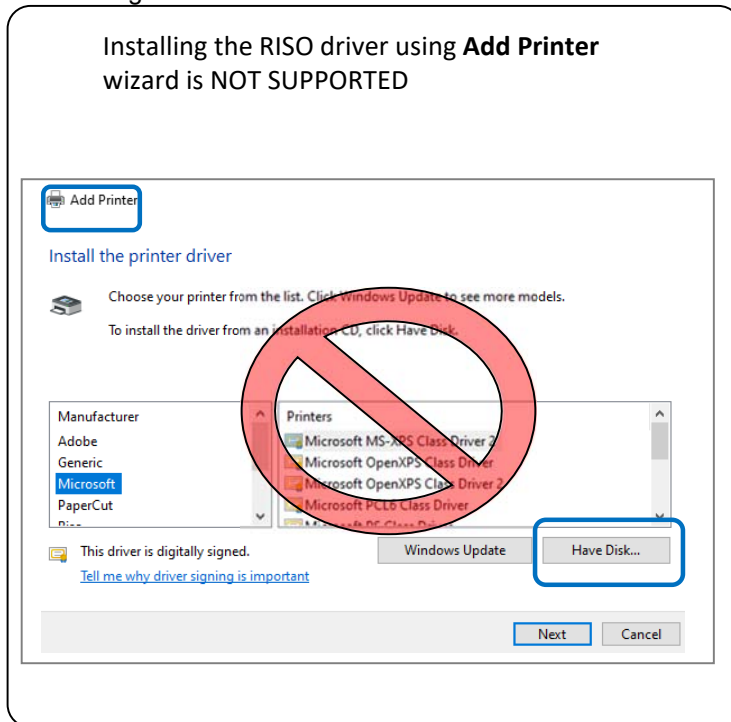
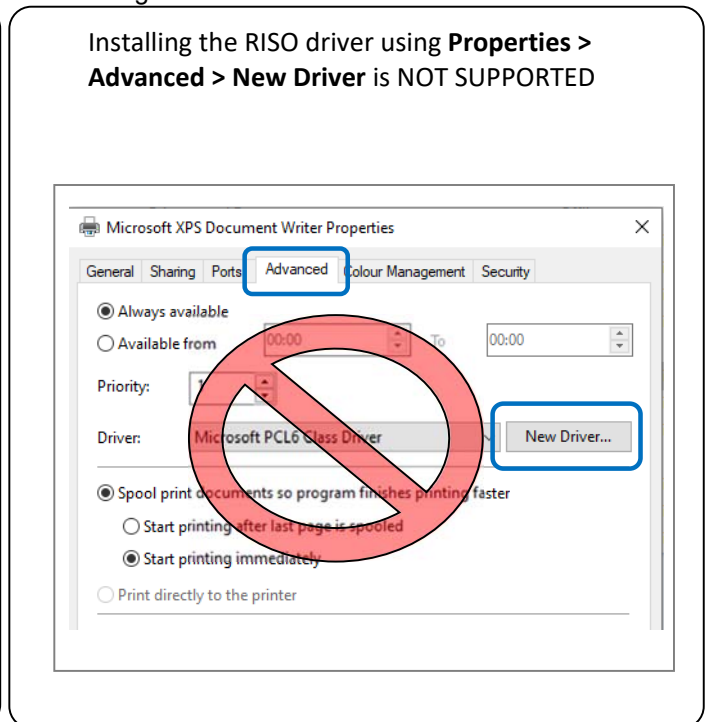
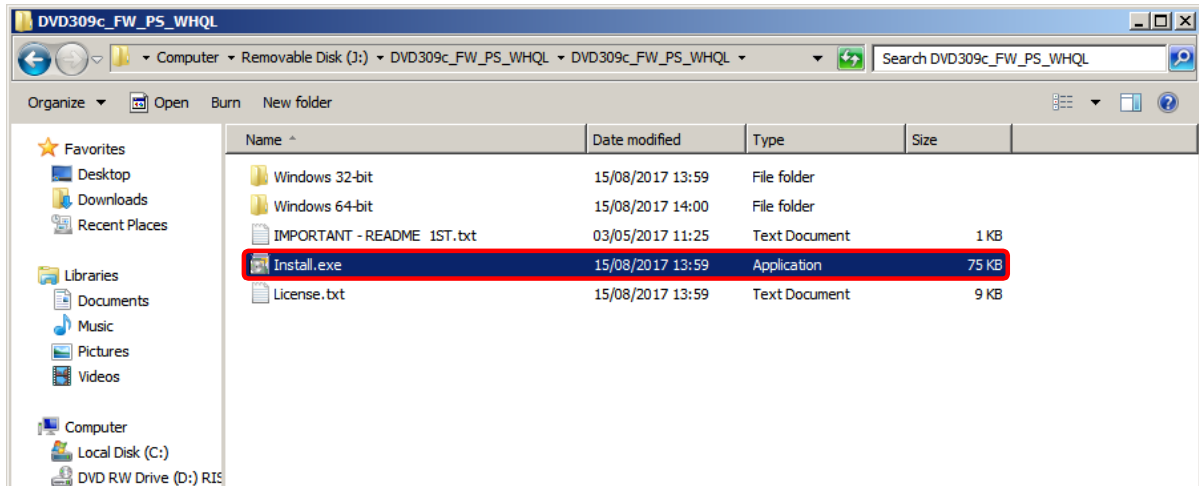


Fig.2

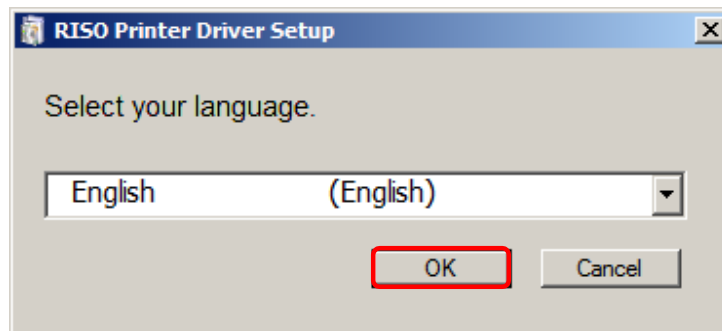


**Installing the RISO driver using either of the two methods above (Fig.1 or Fig.2) will result in a non-Working Printer Driver. Please use the RISO Install.exe or Setup.exe and follow the steps outlined in the following pages.**

1. Unzip the RISO driver folder to a suitable location on your PC.
2. Browse to the unzipped RISO driver folder and click **Install.exe** as shown below.



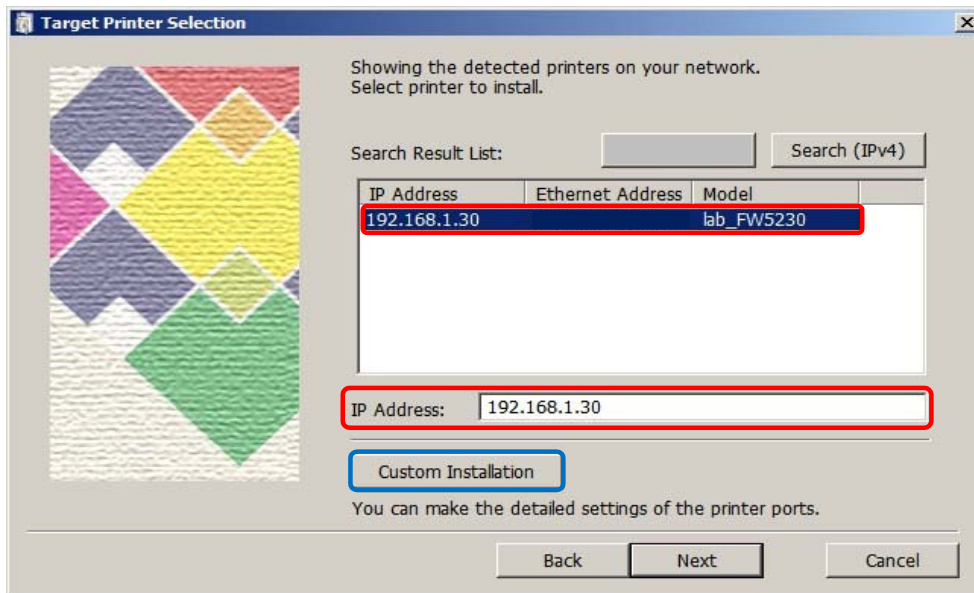
3. Select **English (English)** in the dropdown menu and click **OK**.



4. Select the appropriate RISO printer from the **Search Result List**. If the RISO printer cannot be located, enter the IP Address of the RISO printer into '**IP Address:**'

Alternatively, select **Custom Installation** to select pre-configured port or to create a new port.

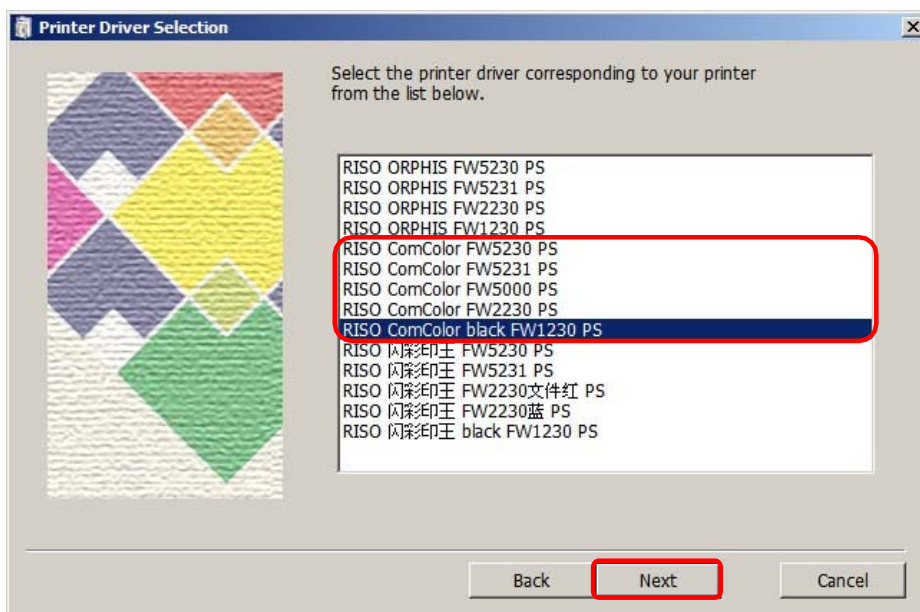
Press **Next** to continue.



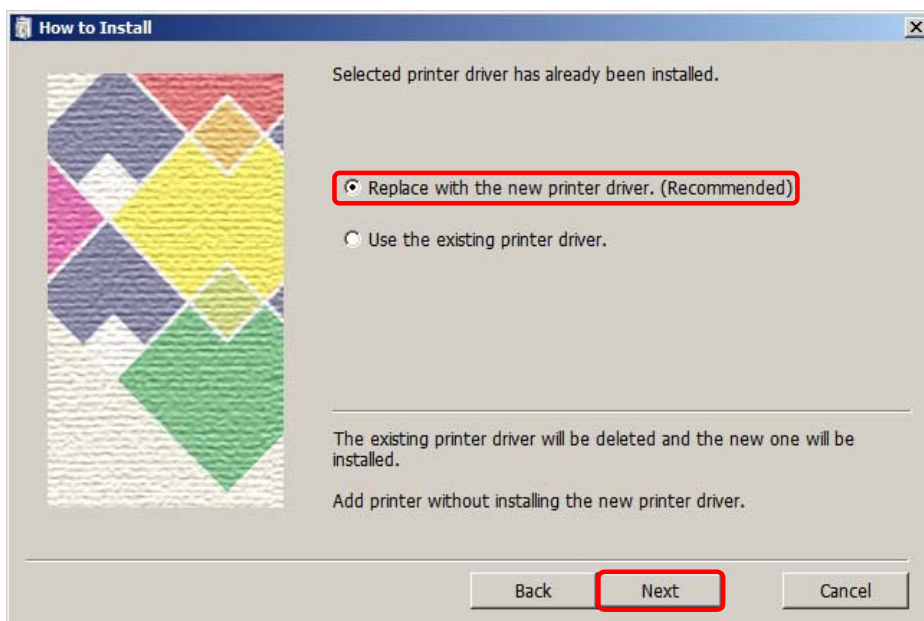
5. Click **Next** to continue.



6. Select the RISO model required, but it must begin with '**RISO ComColor**'.  
Click **Next** to continue.



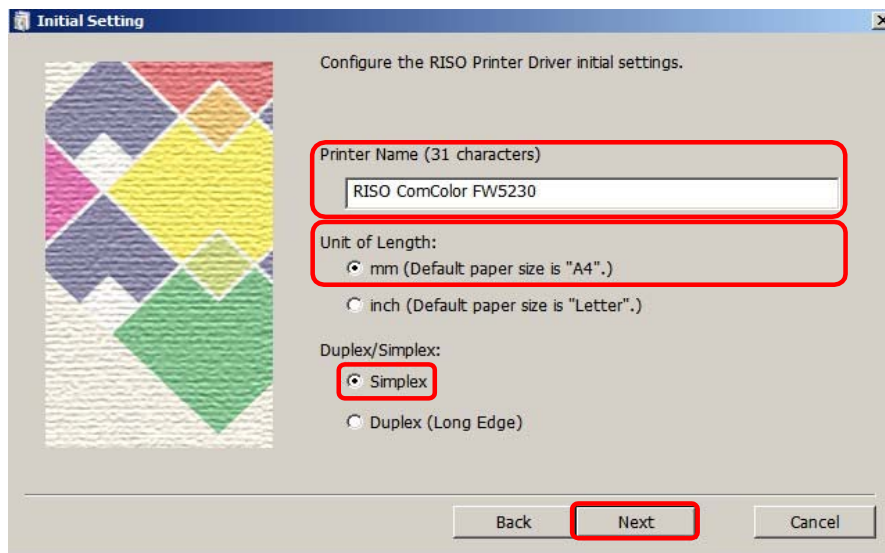
7. Click **Replace with the new printer driver (Recommended)**  
Click **Next** to continue.



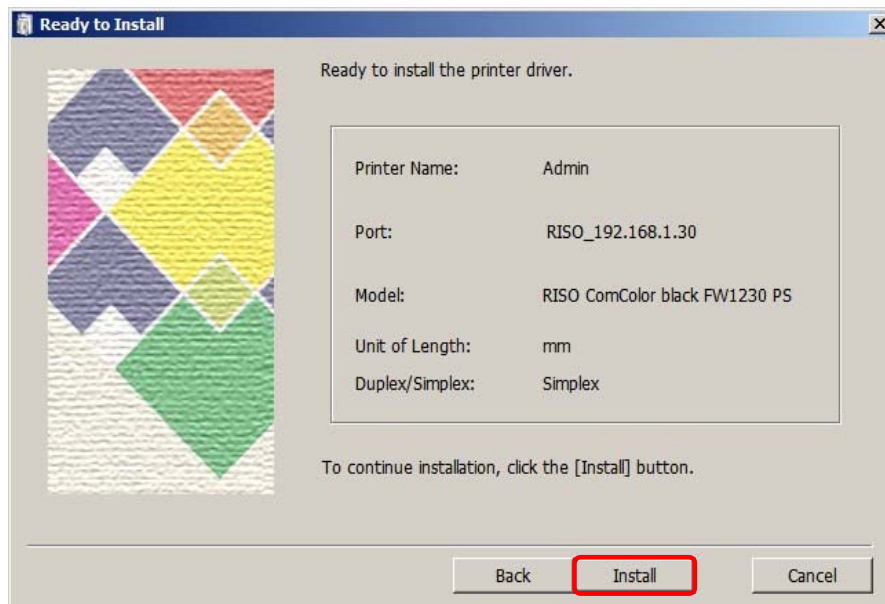
8. Change the Printer name if required and select:
  - Unit of length: – **mm (Default paper size is “A4”).**
  - Duplex/Simplex: - **Simplex**

**Check the details are correct.**

9. Click **Next** to continue.

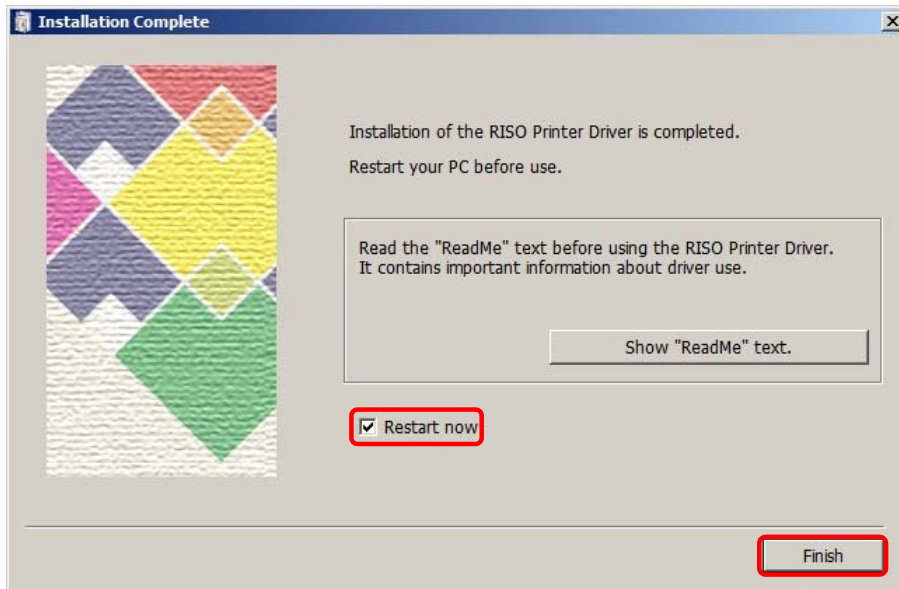


10. Check all the details are correct and click **Install** to continue installation.

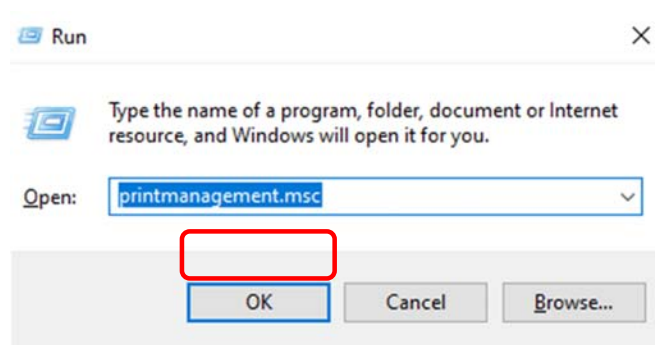


11. After the RISO driver has completed installation, restart the Server. If this is not possible, please schedule a restart by the end of the installation day.

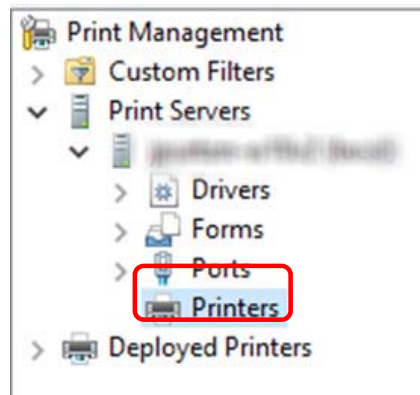
Click **Finish** to complete the installation.



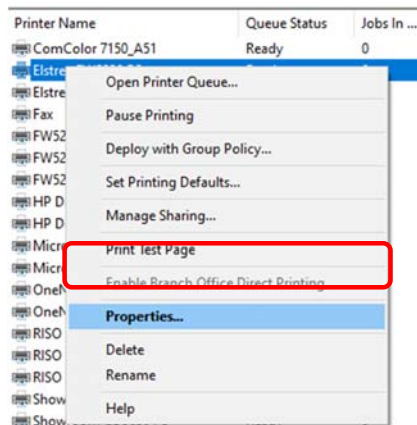
12. Press **Win+R** keyboard shortcuts to open the Run dialog box, type **printmanagement.msc** in the box and click **OK** or tap **Enter** to run Printer Management.



13. Select **Print Servers** and then select your server's name. Then select **Printers**.

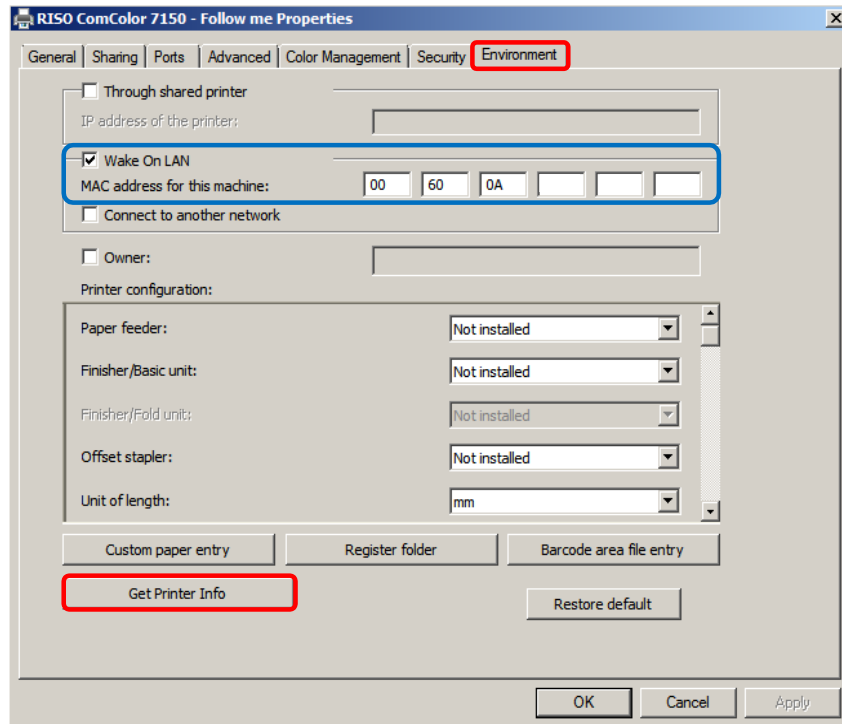


14. Right click on the newly installed RISO driver and select **Properties**.



14. Click sub tab **Environment** and then select **Get Printer Info**

When selecting **Get Printer Info** it will identify what finishing functions is on the RISO device and will populate the driver with the correct finishing functions.



- a. Check to ensure the MAC address and any Finishing options are installed/populated correctly.
- b. Click **Apply** and then click **OK**.

**\*Please ensure the printer is ON and not in Power-Save mode before clicking **Get Printer Info**\***