

Label Printing with a RISO inkjet Printer

This guide includes various recommendations regarding the feeding and printing of labels on the RISO ComColor range of full colour inkjet printers.

MACHINE MODIFICATIONS

If any RISO Inkjet Printer is to be used for the feeding and printing of label stock it is recommended you first speak to your RISO technical support to ensure the machine has any required adjustments or modifications necessary fitted and is in the correct configuration for this purpose.

SUITABLE LABELS

The basic rule for printing on adhesive labels is that the adhesive must never come into contact with any part of the printer as this will cause the label to jam and most likely damage the machine.

Also, adhesive label paper must have no spaces or exposed backing sheet showing between the individual labels on the sheet itself as these are prone to peeling off during use, causing serious paper jam problems.

Uncoated label stock referred to as “**suitable for laser**” and “**jam free**” normally are supplied without spaces or exposed backing sheet and experience in the field has shown that these are the most reliable in use.

LABEL CONDITION

The condition of any label to be printed on the RISO Inkjet Printer is absolutely critical, curl normally attributed to the stocks age and / or to poor storage is often the biggest issue.

Any stock that is curled or “dog eared” will inevitably create problems inside the machine with a high risk of jamming and damage due to possible impact with the printheads.

FEEDING LABELS

For best performance labels should be placed individually or in extremely small piles on the paper feed tray using only the **Standard Feed Tray** or optional **High Capacity Feeder**.

Label sheets should be gently fanned before printing to ensure sheets are separated and not sticking together. Please note that labels should only be used for single sided (simplex) printing and always loaded face up in the paper tray

A number of current RISO Inkjet models feature a “**Slow Printing**” function, where this is available it is important that this is enabled to assist with feeding and printing of labels.

Enabling Slow Printing is highlighted overleaf under “Print Settings”.

Label Printing with a RISO inkjet Printer

PRINT SETTINGS

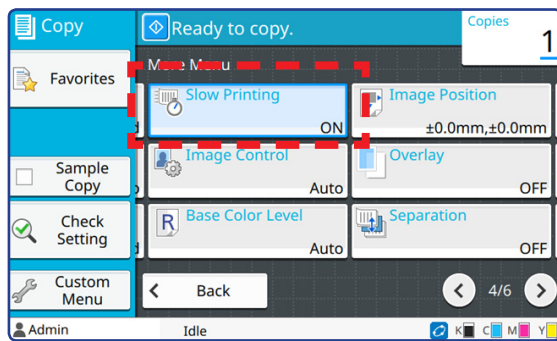
When printing on labels please ensure:

Labels are loaded face up in the **Standard Feed Tray** or optional **High Capacity Feeder***

** (certain models only).*

Job is set to print in **Simplex Mode** (print single sided)

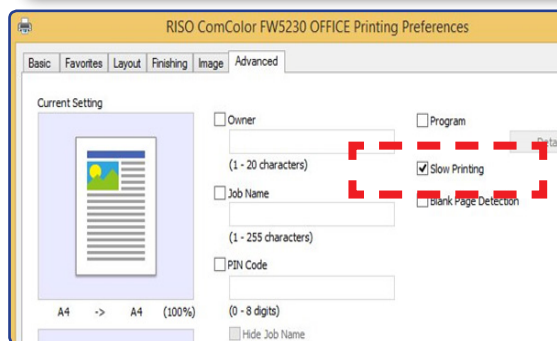
Slow Printing is enabled ()



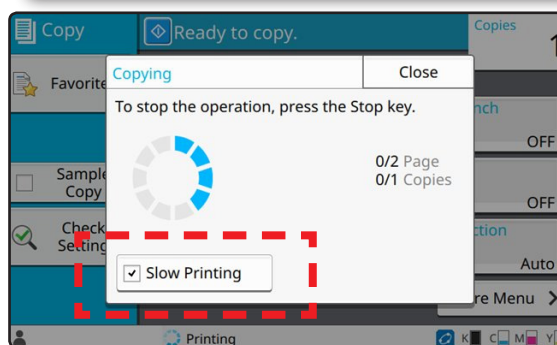
How to set “Slow Printing”

In Copy Mode

FW Operational Panel shown



In Printer Driver (Advanced Tab)



While Printing or preparing to print