

# RISO FW/FT/GD/GL

## Scan to Network Folder (SMB)

### Setup Guide



# Scan to folder SMB (UNC)

The RISO ComColor FW and GD Series support scanning to (SMB) shared folders compatible with operating systems such as Microsoft Windows.

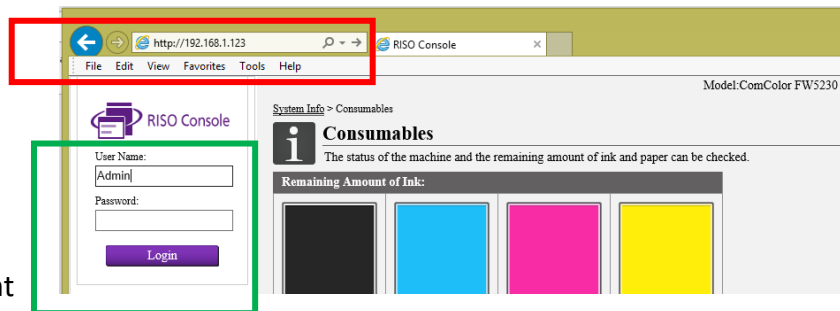
## Requirements for Scan to SMB are:

- A folder must be shared from a compatible operating system to the LAN.
- The shared folder must be accessible by the RISO device(s).
- The shared folder must have a user account assigned with creation/write rights (the RISO device will use this account to scan files into the folder).

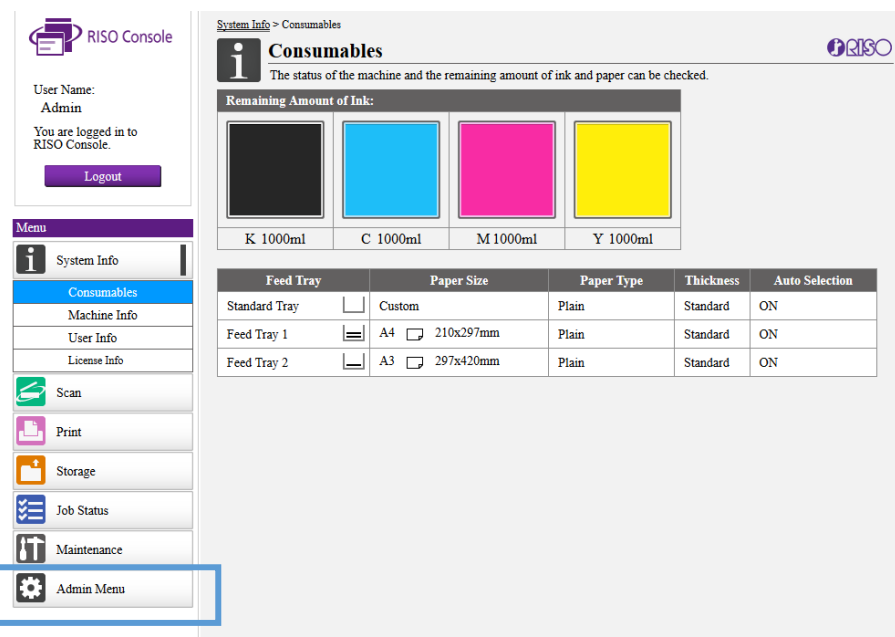
1. Using a web browser, connect to the RISO ComColor web console interface.

a) Open your chosen web browser (Firefox, Chrome, IE etc.) and enter **http://** followed by the **IP Address** of the RISO FW in the address bar.

Example:



b) Login in as **Admin** using an Admin account & password.



c) Select: **Admin Menu**

d) From the Admin Menu select: **System**

RISO Console

User Name: Admin

You are logged in to RISO Console.

Logout

Menu

- System Info
- Scan
- Print
- Storage
- Job Status
- Maintenance
- Admin Menu**
  - User Ctrl
  - System**
  - Printer
  - Scanner

Admin Menu

The printer can be configured.

System

- Job/Document Management
- Admin Setting List
- Custom Paper Entry
- Function Key Entry
- Clock/Date
- NTP Time Synchronization
- Beep Sound
- Metric/Inch Switch
- Auto Reset Setting
- Power Saving Setting
- Auto Power-OFF Setting
- Power Schedule
- Network Setting**
- IP Address Limiting (IPv4)
- IP Address Limiting (IPv6)
- IPsec Setting
- Effective Protocol
- Display Language
- Console Startup Display
- Home Screen Customization
- Startup Display
- USB Mode Auto Transition
- Finished Job Setting

e) From the list of menu items on the right, select: **Network Setting**

f) If the RISO is to be used on a LAN with a Windows domain, enter the FQDN name as required.

RISO Console

User Name: Admin

You are logged in to RISO Console.

Logout

Menu

- System Info
- Scan
- Print
- Storage
- Job Status
- Maintenance
- Admin Menu
  - User Ctrl
  - System**
  - Printer
  - Scanner

Admin Menu > Network Setting

**Network Setting**

Set the network connection for this machine.

Basic Info

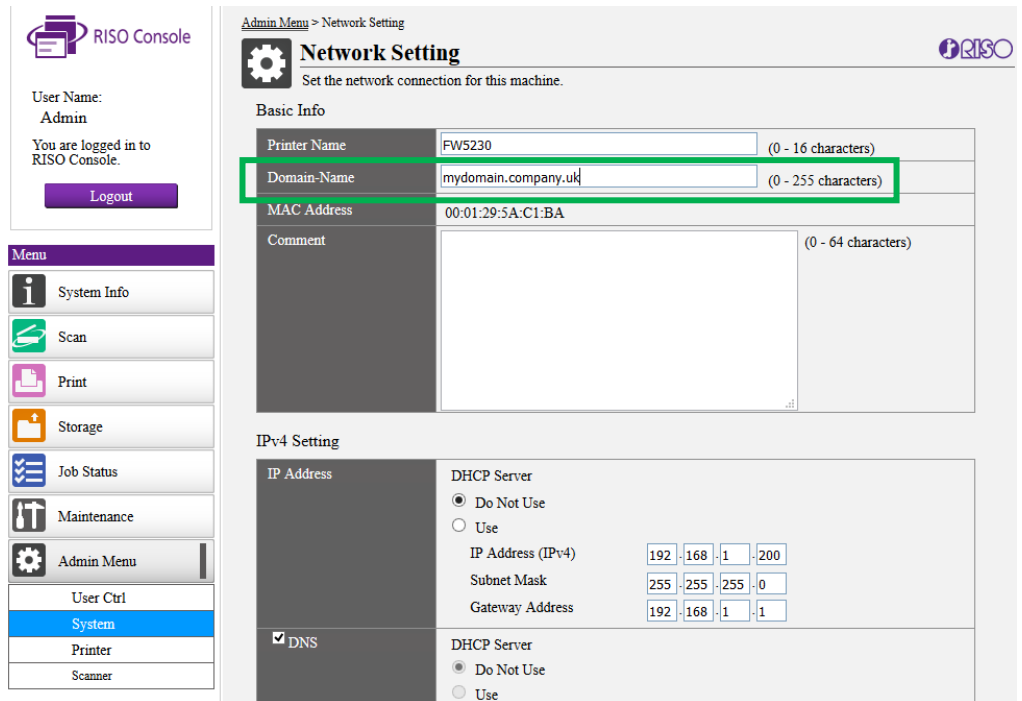
Printer Name	FW5230	(0 - 16 characters)
Domain-Name		(0 - 255 characters)
MAC Address	00:01:29:5A:C1:BA	
Comment		(0 - 64 characters)

IPv4 Setting

IP Address	DHCP Server
	<input checked="" type="radio"/> Do Not Use
	<input type="radio"/> Use
	IP Address (IPv4) 192 . 168 . 1 . 200
	Subnet Mask 255 . 255 . 255 . 0
	Gateway Address 192 . 168 . 1 . 1
<input checked="" type="checkbox"/> DNS	DHCP Server
	<input checked="" type="radio"/> Do Not Use
	<input type="radio"/> Use



g) For example:  
**mydomain.company.uk**



The screenshot shows the RISO Console interface. On the left is a navigation menu with options: System Info, Scan, Print, Storage, Job Status, Maintenance, Admin Menu, User Ctrl, System, Printer, and Scanner. The 'Admin Menu' is selected. The main content area is titled 'Network Setting' and includes a 'Basic Info' section with fields for Printer Name (FW5230), Domain-Name (mydomain.company.uk), MAC Address (00:01:29:5A:C1:BA), and Comment. The 'Domain-Name' field is highlighted with a green box. Below this is the 'IPv4 Setting' section, which includes DHCP Server options (Do Not Use selected), IP Address (192.168.1.200), Subnet Mask (255.255.255.0), and Gateway Address (192.168.1.1). A 'DNS' checkbox is also present and checked.

h) From the Admin Menu select: **Scanner**

RISO Console

User Name: Admin

You are logged in to RISO Console.

Logout

Menu

- System Info
- Scan
- Print
- Storage
- Job Status
- Maintenance
- Admin Menu**
- User Ctrl
- System
- Printer
- Scanner

Admin Menu

The printer can be configured.

Scanner

- Mail Address Entry
- Scan Data Directory**
- Color/Black Slice Level
- Additional Copy Button
- Scan Document Save Setting
- Mail Setting
- Address Input Permission

i) From the list of menu items on the right, select: **Scan Data Directory**

RISO Console

User Name: Admin

You are logged in to RISO Console.

Logout

Menu

- System Info
- Scan
- Print
- Storage
- Job Status
- Maintenance
- Admin Menu
- User Ctrl
- System
- Printer
- Scanner

Admin Menu > Scan Data Directory

**Scan Data Directory**

PC addresses where scan document is sent can be added or edited.

Add

All | ABC | DEF | GHI | JKL | MN | OP | QR | STU | VW | XYZ | ~/ | 0-9

ABC

DEF

GHI

JKL

MN

OP

QR

STU

VW

XYZ

~/

0-9

j) Select **Add** to create a new scan destination.

k) This will open the Add PC address window.

l) Enter the appropriate details for your scan type and destination.

*[The storage Directory should be created in advance & shared to the LAN].*

**It may be necessary to use the IP Address of the destination Server/PC instead on the computer name.**

m) Enter the username and password with credentials to scan files to the chosen folder.

**NB:** If the FQDN domain was NOT entered in the previous step, enter the username preceding with the domain name. **For example: mydomain\username.**

j) Perform a **Communication Test**

If successful, press OK to save the settings.

If unsuccessful, check the settings and try again.

**RISO Console**  
 User Name: Admin  
 You are logged in to RISO Console.  
 Logout

**Menu**  
 System Info  
 Scan  
 Print  
 Storage  
 Job Status  
 Maintenance  
 Admin Menu  
 User Ctrl  
 System  
 Printer  
 Scanner

**Admin Menu > Scan Data Directory > Add**  
**Add**  
 PC addresses can be added.

PC Address Setting **Communication Test**

Display Name: OfficeScan (1 - 10 characters)  
 Index: OP  
 Transfer Protocol:  FTP  SMB  SMB (UNC)  
 Storage Directory (e.g.: \\PC1234\directory\sub-directory): \\win2008r2\public\office-scans  
 Directory Login Name: scanuser  
 Directory Login Password: \*\*\*\*\*

OK Cancel

k) Once the Scan Destination has been saved, logout of the Web Console Interface and perform a test scan to check all is working as expected.

**RISO Console**  
 User Name: Admin  
 You are logged in to RISO Console.  
 Logout

**Menu**  
 System Info  
 Scan  
 Print  
 Storage  
 Job Status  
 Maintenance  
 Admin Menu  
 User Ctrl  
 System  
 Printer  
 Scanner

**Admin Menu > Scan Data Directory**  
**Scan Data Directory**  
 PC addresses where scan document is sent can be added or edited.

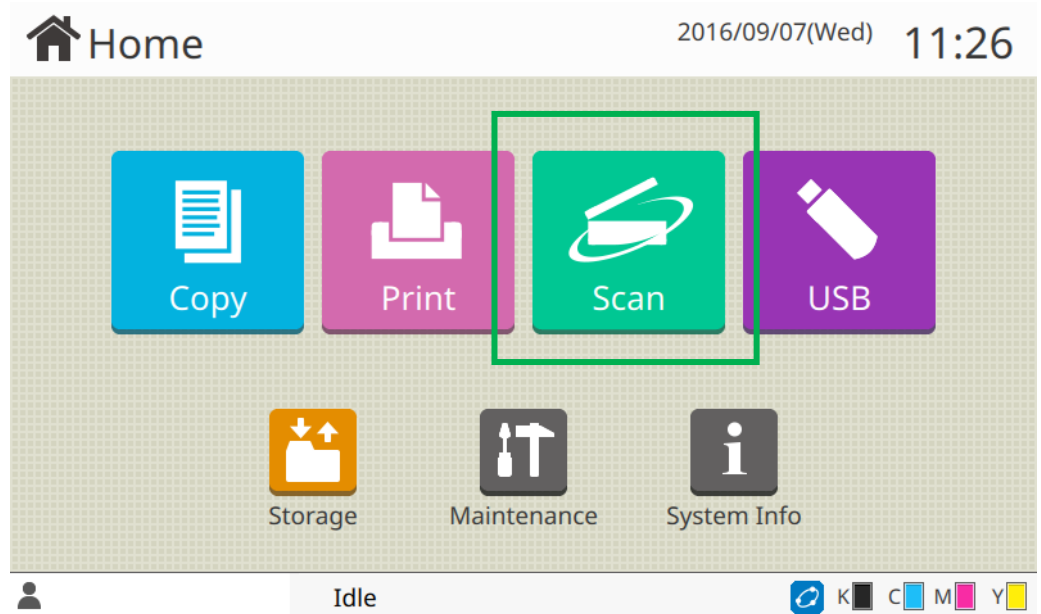
Add

All | ABC | DEF | GHI | JKL | MN | OP | QR | STU | VW | XYZ | ~ | 0-9

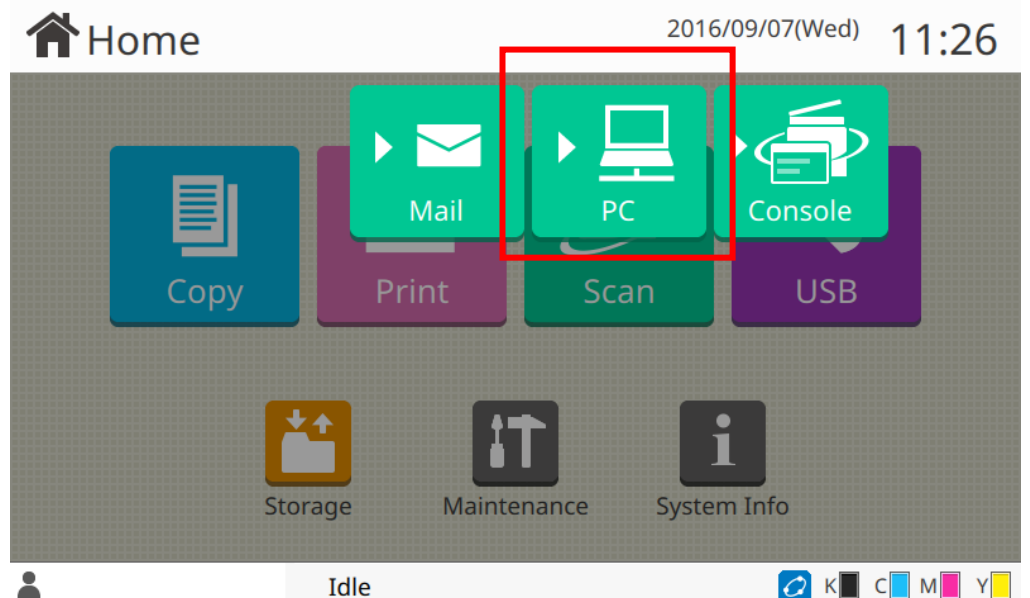
ABC  
 DEF  
 GHI  
 JKL  
 MN  
 OP OfficeScan  
 QR  
 STU  
 VW  
 XYZ  
 ~  
 0-9

2) To perform a Scan to SMB test on the RISO ComColor, go to the Home Screen of the LCD control panel:

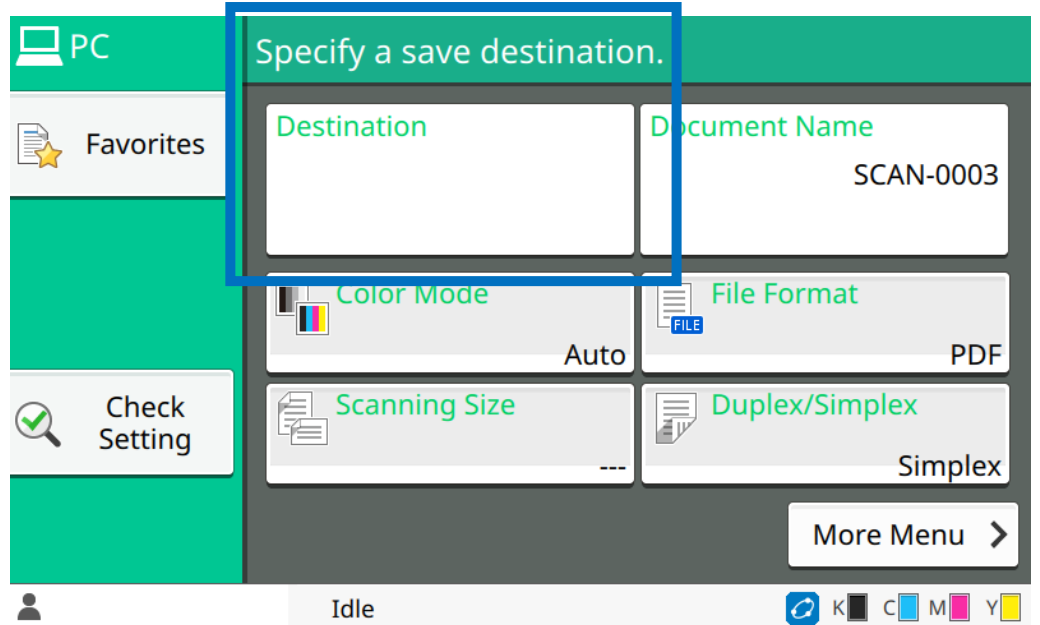
▲ a) Select the **SCAN** button



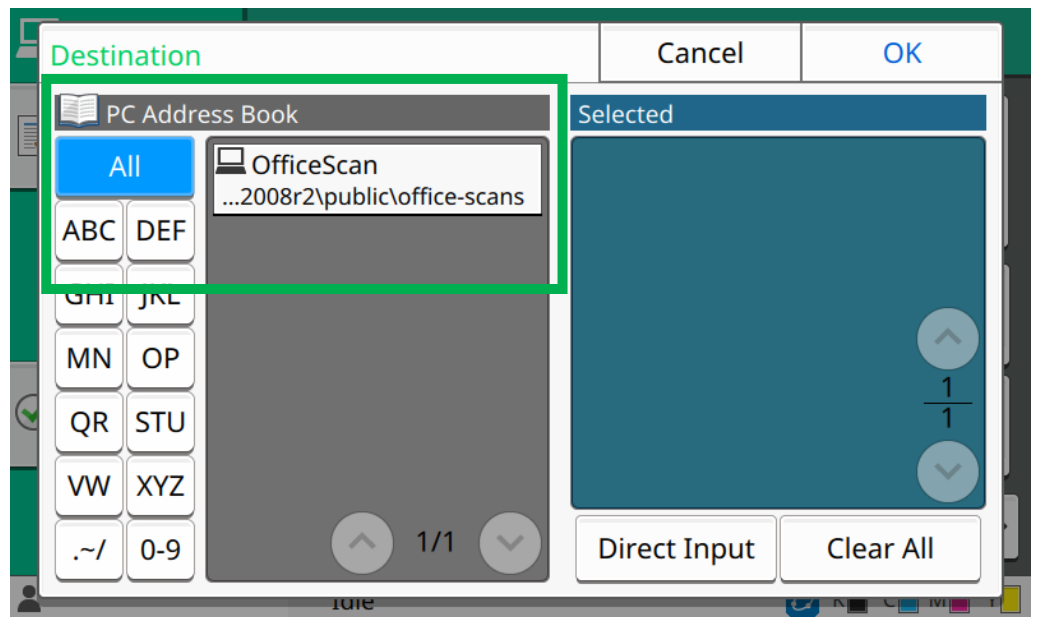
▲ b) Select **PC** from the destination options



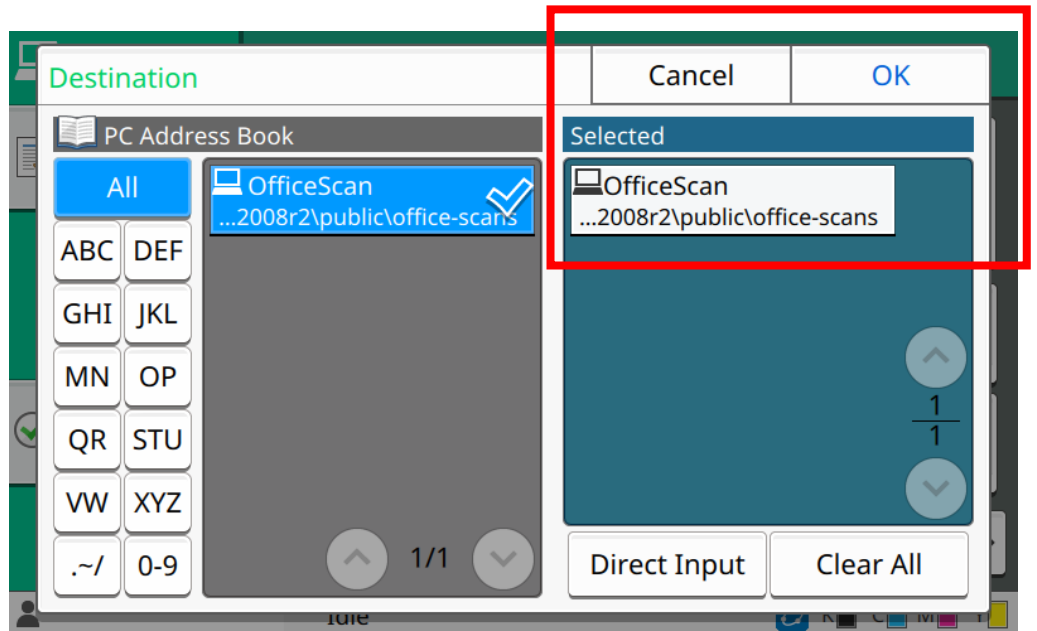
c) Press the **Destination** button



d) Choose the scan location created in the previous steps.

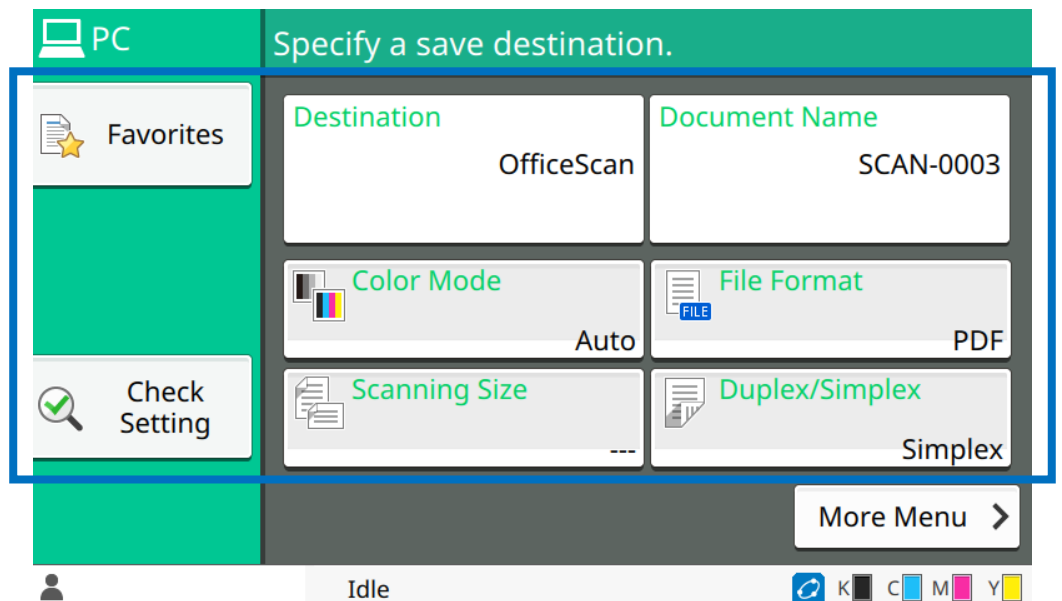


▲ e) Press **OK** to continue



▲ f) Make the necessary changes for **Color Mode, File Format** etc.

g) Place the original document you wish to scan on either the platen glass or ADF and press the **Blue Square** start button on the Control Panel



h) After a few seconds the file should appear in the SMB folder location on the PC/Server. Open the scanned file to check the contents are correct

**Scan to SMB is now configured. Add more Scan to SMB locations as required and re-test.**